

ChairkiD

A philosophy!

Central idea of a dynamic company

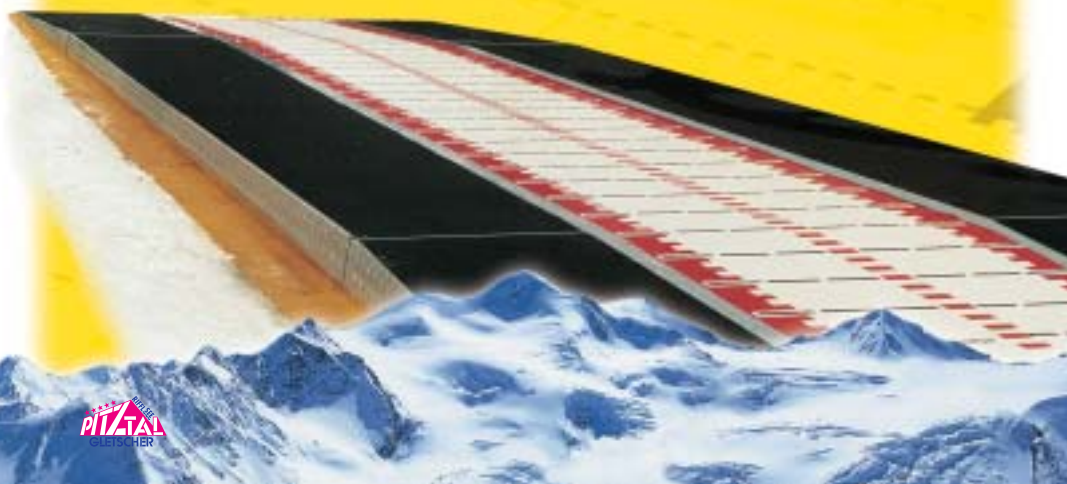
The challenges for us do not usually come from the customer (partner), but more often from their H.

Our work is done when BOTH are happy!



A-6474 JERZENS - TIROL, Postfach 9

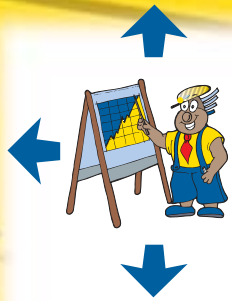
TEL. +43/5414/86816 · FAX +43/5414/86813 · e-mail: chairkid@tirol.com · www.chairkid.com



The **intelligent uplifting** conveyor belt for boarding ski lifts, which can be coupled or are fixed to cables



THE THIRD DIMENSION



Questions on ...

ChairkiD – Why?

With the practically relevant and tried-out concept of ChairkiD you can inexpensively optimise your ski lift installation to the advantage of your guests and your company with regard to comfort, security and capacity.

1. Do you want to increase your capacity – fewer empty chairs and/or higher speed?



By hassle-free boarding and proper positioning of the passenger there will be a markedly higher capacity utilisation of your ski lift installation. When we speak of facilitated and optimised boarding, we actually mean the **ChairkiD**.

2. Do you want the enhanced, safe and height adjusted positioning of your (short) passengers in the boarding area?



With perfect timing and helpful track marking on the conveyor belt, each passenger can achieve the proper boarding position. Not only do we position in direction of travel or sideways to the chair, but we also adjust the height for your shorter passengers. **Children and parents will be very grateful to you.**

3. Do you want increased boarding comfort for your passengers? (Impact)



The reduction of the chair's impact speed through acceleration by the passenger means comfort. Never again having frozen or slippery conveyor belts guarantees not only more comfort, but also increased security. Optimal standing security due to exchangeable rubber edges prevents the risk of falling. **Increased boarding comfort results in higher frequency of the installation.**

4. Do you want to optimally employ and relieve your staff?



Don't forget that boarding comfort and security also mean relieving the lift staff. This in turn allows staff to concentrate more on reducing risks! **User friendliness is important to us.**

5. Do you want to save money, prove your innovativeness and increase the security and comfort of your passengers?



In that case you have made the right choice – the ChairkiD boarding conveyor belt increases the performance of your installation and helps you to save money (or to earn it). **ChairkiD – the intelligent lifter.**



Happy customers, happy guests ...

Installations for reference

(Season 99/00)



Four-chair ski lift fixed to cable
Austria-Tyrol / Fiss



Two-chair ski lift fixed to cable
Austria-Vorarlberg / Schruns



Two-chair ski lift fixed to cable
Austria-Styria / Maria Alm



Two-chair ski lift fixed to cable
Switzerland / Flumserberge



Six-chair ski lift, chairs can be coupled
South Korea / Jisan Ski resort



Six-chair ski lift, chairs can be coupled, with lifting. **Switzerland / Stätzer Horn**

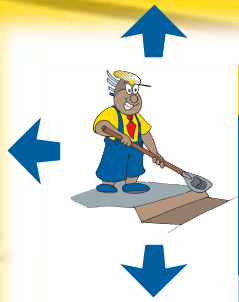


Two-chair ski lift fixed to cable with lifting
Austria-Tyrol / Pitztaler Gletscher



Four-chair ski lift, fixed to cable
Austria-Vorarlberg/SilvrettaNova





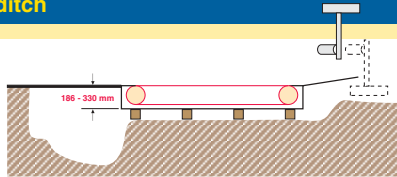
Ditch Technology ...

From nothing to deep ...

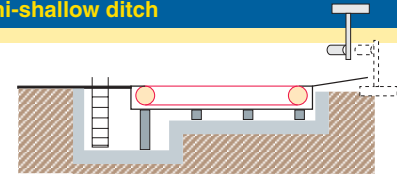
Where, How, What for, When, What, For what reason, Why?

Experts who specialise in this field give objective, practically relevant and expert answers.

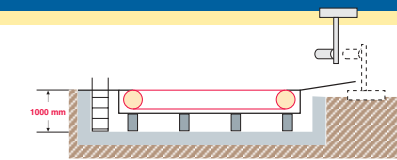
No ditch



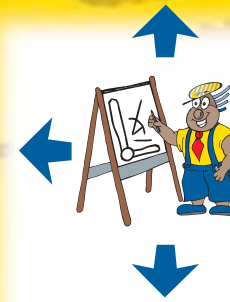
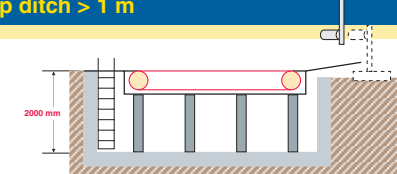
Semi-shallow ditch



Shallow ditch < 1 m



Deep ditch > 1 m



Technology ...

Overall height, structure ...

Technically unique specimen!

The overall height is one of our most important features

We are the only manufacturer worldwide that is in a position to offer a conveyor belt boarding help with a minimum height of 186 mm. This technology enables installation under extremely tight space conditions.

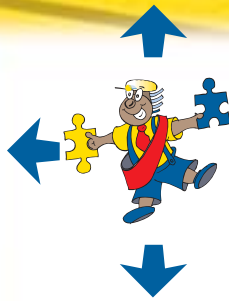
Give meaning to the ditch for the foundation!

The deeper the ditch, the higher the costs. Thanks to ChairkiD neither is applicable any longer. If the space conditions do not allow for it, the ditches can be abandoned altogether. This does not mean that we do not build them – what we offer is an optimal cost efficient solution.



Little time needed for the installation by modular technology.





Belt technology ...

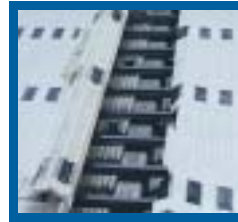
The measure of all things

ChairkiD – the pioneer in belt technology

The conveyor belt is made of a special synthetic material only used by ChairkiD. The individual belt modules (largest module 50 mm x 200 mm) can be targeted to customers with regard to the number of rubber carriers, belt colour or the track marking. They can also be exchanged on site!

The costly sideways control of conveyor belt guidance belongs to the past for us.

Coloured track marking as orientation support



The belt can be opened wherever it is convenient



Customer specific with regard to arrangement and number – The antislip elements

Sideways tracking of the belt



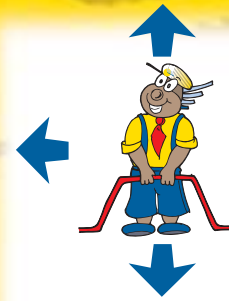
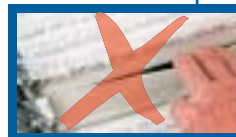
No turning expendable parts for the belt guidance this means no source of errors – no maintenance!



easy, robust belt guidance



belt guidance Broken textile belts make us smile leniently.



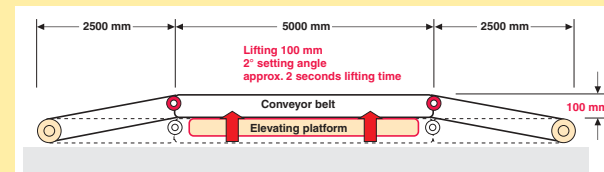
Lifting Technology ...

Fixed to cable or coupled!

Installation possible without ditch

- Lifting mechanism is hydraulic and has few maintenance requirements
- Easily accessible and user friendly
- Radio-controlled or automatic lifting by passenger height recognition
- Large radius of action for lift staff by radio controlled lifting
- Lifting height can be individually regulated from 0-150 mm
- Lifting and lowering time for elevating platform is system-dependent (normally 2-3 seconds)

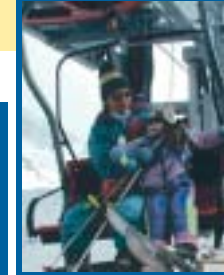
Lifting for ski lifts fixed to cable



The whole conveyor belt is brought into a convex shape with a hydraulic elevating platform and lifted by approximately 100 mm in the boarding area.

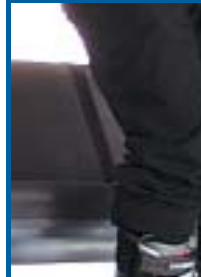
✗ Not this way!

✓ This is the right way!



✗ Not this way!

✓ This is the right way!



THE THIRD DIMENSION



Lifting for lifts that can be coupled

The boarding area is lifted by the elevating platform by 100 mm. The conveyor belt is connected to the elevating platform by a joint.

